

PM2008 八通道光功率计

PM2008 8-channel optical power meter

产品规范

Specification



概述 Descriptions

PM2008 8 通道光功率计是一款由 PC 机控制的、针对所有多端口无源器件功率测量的仪器，当然也可同时测试多个单端口器件。仪器主要用于多通道的精密波分复用 DWDM 元件测试、多路复用器、PON 分路器、波长选择开关（WSS）、可重构光分差复用器 ROADM、光波导光栅阵列 AWG 元件和平面光波导 PLC 元件及模块，以及其它常用的多端口光纤的光学测量和应用。该系统可以扩展集成可调谐激光光源，光衰减器以及偏振控制器，形成一个高性能的无源器件和模块的自动测试系统平台。

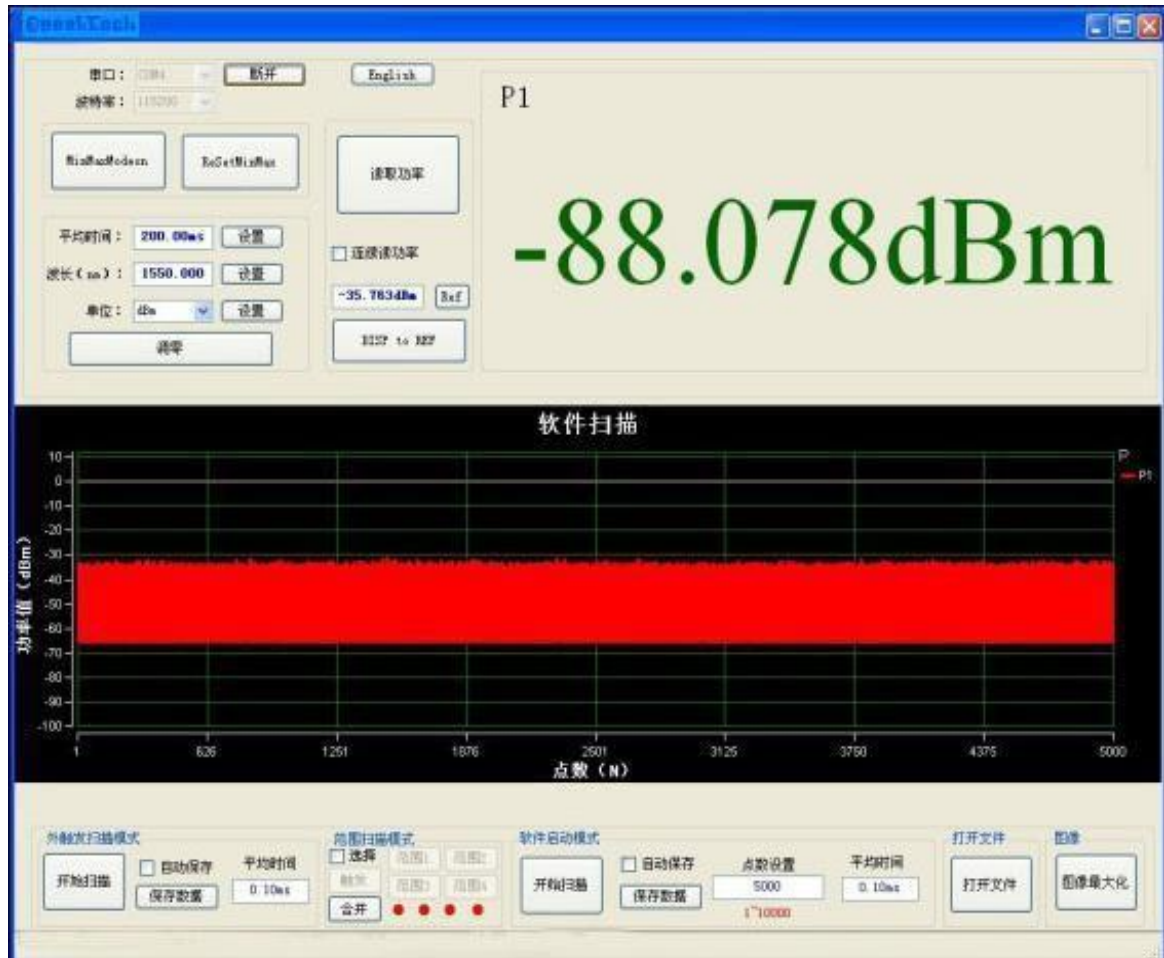
Pm2008 8-channel optical power meter is a PC controlled instrument for power measurement of all multi port passive devices. Of course, it can also test multiple single port devices at the same time. The instrument is mainly used for multichannel DWDM component test, multiplexer, PON splitter, WSS, ROADM, AWG component of optical waveguide grating array, PLC component and module of planar optical waveguide, and other commonly used optical measurement and application of multi port optical fiber. The system can be extended and integrated with tunable laser source, optical attenuator and polarization controller to form a high-performance automatic test system platform for passive components and modules.

性能特点 Features

应用范围 Applications

Fast startup, High accuracy 启动快速、测量精度高 试	WDM, AWG, GFF, PLC components tests WDM, GFF, AWG, PLC 器件测
Wide dynamic power range 宽动态功率测量范围	Insertion Loss, Return Loss 插损, 回损测量
PC Configuration software PC 机软件控制	Fiber sensor and fiber cable tests 光纤传感器, 光纤电缆测试
Standard RJ45 Ethernet interface 标准的 RJ45 以太网接口, 高速便捷	PMD and PDL measurements 偏振模色散 PMD 和偏振相关损耗 PDL 测量
Compact size Competitive price 价格实惠	Fiber optical, telecom R&D lab tests 光纤, 通讯 R&D 实验室测试

软件界面 PC Configuration Software Monitoring Interface:



性能指标 Specifications

型号 Model	PM2008
通道数量 Number of channels	8
波长范围 operating Wavelength Range	850 ~ 1700 nm
功率范围 Power Range	+3~-80dBm
平均采样时间 Average sampling time	0.001ms~1000ms
光纤类型 Application Fiber Type	Standard SM and MM up to 62.5 um core size
绝对精度 Uncertainty (accuracy) at reference condition	+/- 4% (1200 nm ~ 1610 nm)
相对精度 Relative Uncertainty(accuracy) at reference condition	< 0.02 dB Typical
功率线性度 Power Linearity	$\leq \pm 0.02$ dB (1200 nm ~ 1610 nm, + 0 ~ -60 dBm)
回损 Return Loss	> 40 dB
校准周期 Recalibration Period	2 years
光输入接口 Optical Interface	FC/PC connector or bare fiber fixture
通信接口 Communication Interface	RJ45 以太网接口(Standard RJ45 Ethernet interface)
工作温度 Operating Temperature	0 ~ +40°C
存储温度 Storage Temperature	-10 ~ +70°C

技术支持和服务

Test and Measurement Supports, Services and Assistance

我公司为我们的客户提供了高性能、高品质、低价位的测量仪器及测试系统。我们强大的技术资源可以帮助您选择并正确使用本公司合适的产品以满足您的应用需求。我们销售的每种仪器都拥有全球保修服务，提供最少 12 个月的出厂保修期。

Our company provides high performance, high value, low cost, affordable test and measurement instrument solutions for our customers. Our extensive support sources can help you choose right Our products for your specific applications and apply them successfully. Every instrument system we sell has a global warranty. All of our instruments are with at least 12 months factory warranty.

我们的承诺 Our Promises

我公司所有的测量仪器和测试系统均符合其资料所描述的功能和性能指标。一旦您选择了我公司产品，我们将为您提供合格的产品以及产品操作使用方法。对于有特殊功能的使用，我们会提供基本的测量帮助。

Our company' all test and measurement instruments and systems meet their advertised performance and functionality. When you select our product, we can help your product operation with our decade experiences, and provide the basic measurement assistance for the use of special capabilities.

联系信息 Contact Information

EXdBm TECHNOLOGY (DongGuan) CO.,LTD

Add: Room 1618, The consulting office of songhuli maker base, No.6, Keji 2 Road, Songshanhu Park, Dongguan City, Guangdong Province 523808 China

Tel:0769-22231952

Fax:0769-22231950

E-mail: sales@exdbm.com

<http://www.exdbm.com>

优峰通信技术（东莞）有限公司

地址：广东省东莞市松山湖园区科技2路6号松湖里研发基地1816室，523808，中国

电话：0769-22231952

传真：0769-22231952

邮箱： sales@exdbm.com

网址： <http://www.exdbm.com>